

# The Bridgewater II

3 Bedrooms | 2.5 Bathrooms | 2-Car Garage | 2,522+ SF



**BUNGALOW**



**COTTAGE**



**ARTS AND CRAFTS**



**FARMHOUSE WITH STONE**



**EASTERN SEABOARD**



**CRAFTSMAN**



**MODERN FARMHOUSE**

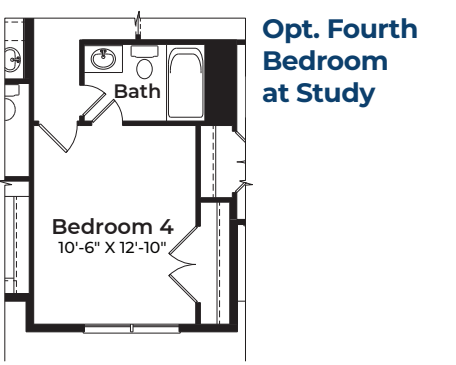
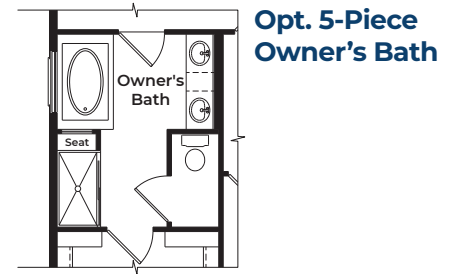
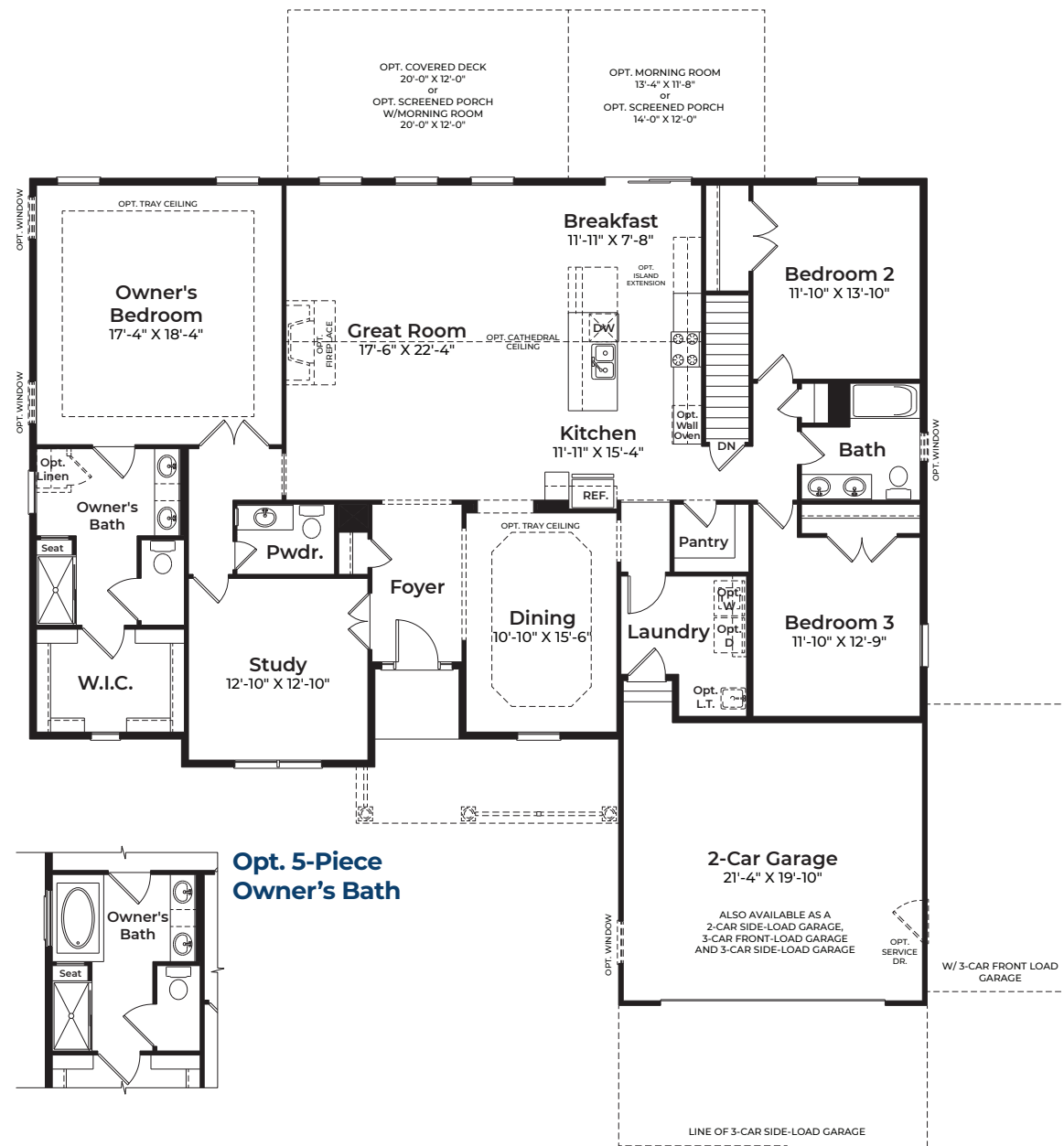
BASE PRICE .....
HOMESITE NUMBER .....
HOMESITE PREMIUM .....
OPTIONS .....
TOTAL .....

**ATLANTIC**  
BUILDERS

[ATLANTICBUILDERS.COM](http://ATLANTICBUILDERS.COM) 

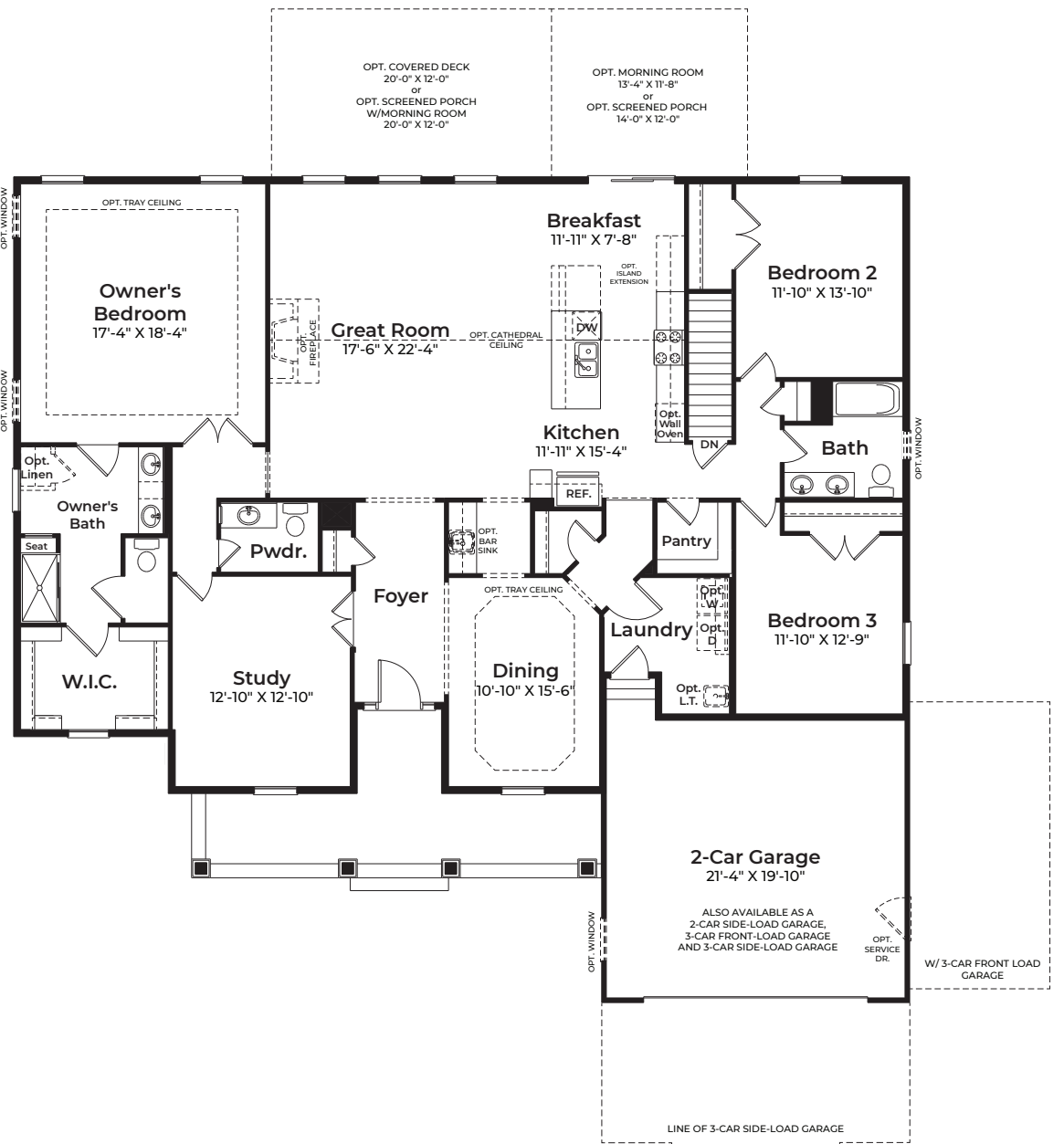
\*These renderings and floorplans are conceptual only. Actual details may vary. This insert is for illustrative purposes only. Atlantic Builders' continuing research and development program means specifications and plans are subject to change without notice. Standard features vary per community. Please consult Community Sales Manager for details. VZZ/2025

THE BRIDGEWATER II



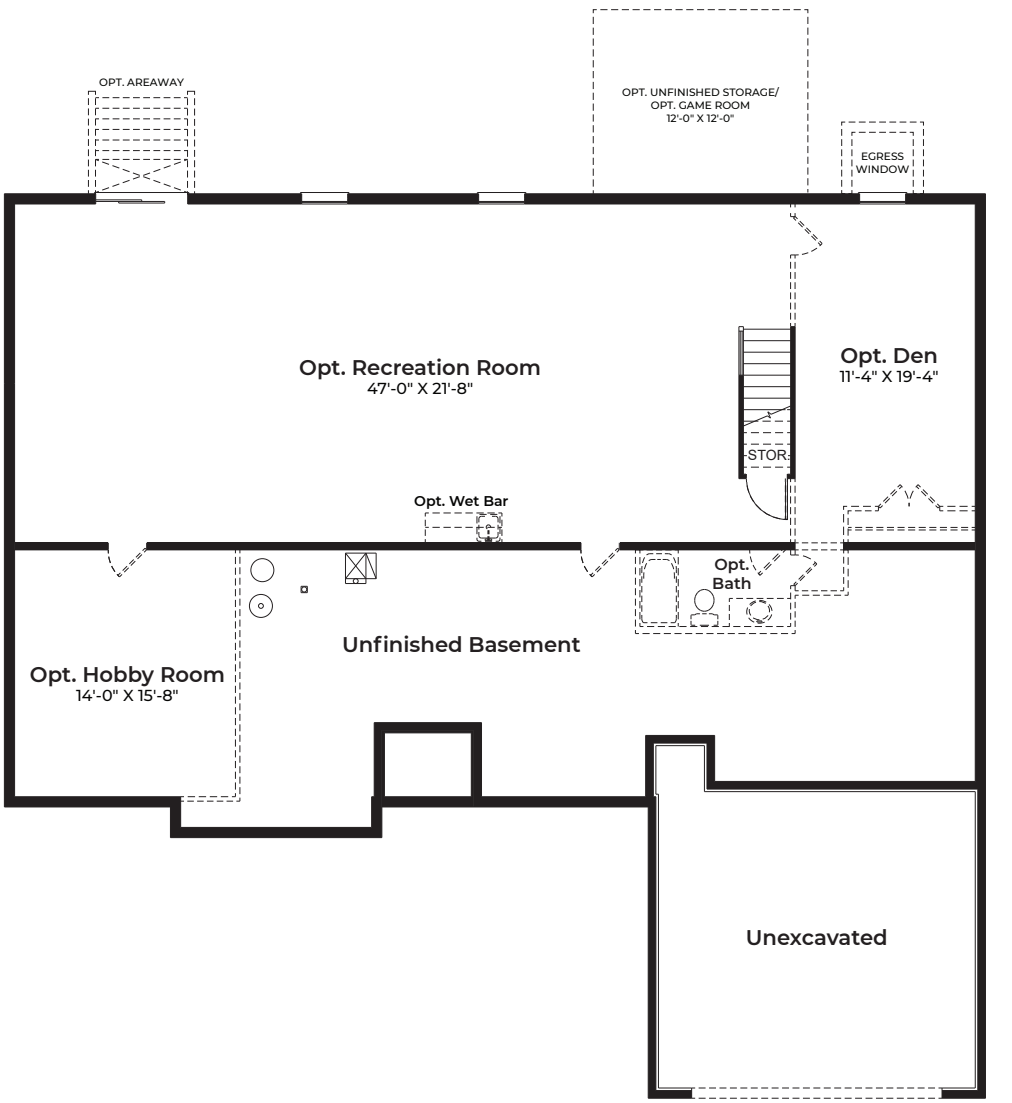
MAIN LEVEL

**Eastern Seaboard & Farmhouse Elevations w/ porch**



ALTERNATE MAIN LEVEL

**Craftsman, Cottage, Arts & Crafts, Bungalow and Modern Farmhouse Elevation**



FOUNDATION